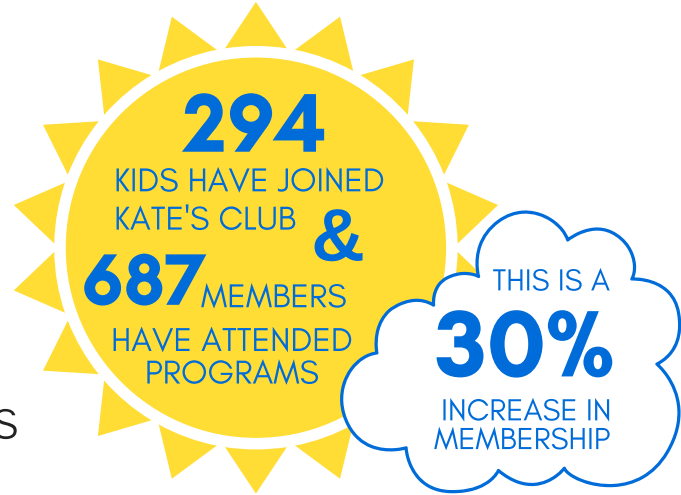


THE KATE'S CLUB IMPACT

2019



KATE'S CLUB MEMBERS
ARE FROM: **27**
& COUNTIES
143 ZIP CODES
IN METRO ATLANTA AND
THE SURROUNDING AREAS



"A grieving family should join Kate's Club because they will experience love and support from people who understand; they won't have to walk through this journey alone."

-KATE'S CLUB PARENT

KATE'S CLUB
HAS SERVED
OVER



SINCE THE
FIRST PROGRAM
IN 2003



100

NEW VOLUNTEERS
HAVE JOINED
THE KATE'S CLUB
COMMUNITY AND
DONATED THEIR TIME.

37
SUPPORT GROUPS
WERE CONDUCTED AT

23 DIFFERENT
SCHOOLS

REACHING OVER

190

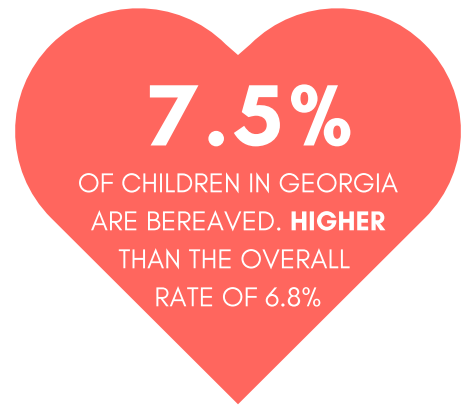
STUDENTS

WHO WE HELP



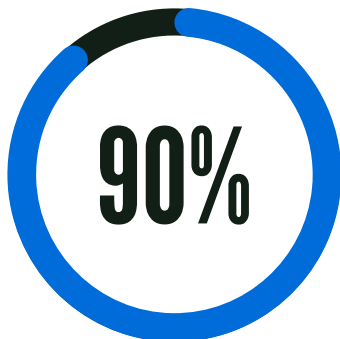
1 IN **5**

CHILDREN WILL EXPERIENCE THE DEATH OF A LOVED ONE BY THE AGE OF 18



MORTALITY RATES FOR ADULTS IN THEIR 40'S AND 50'S IN THE PAST TWO DECADES HAVE RISEN DRAMATICALLY, MAKING IT MORE LIKELY THAT YOUNGER CHILDREN HAVE EXPERIENCED THE DEATH OF A PARENT OR LOVED ONE.

IN A POLL OF 1,000 HIGH SCHOOL STUDENTS



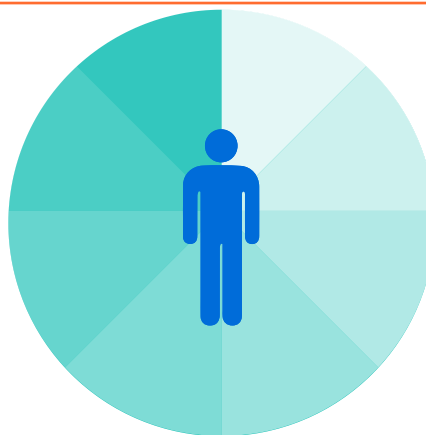
INDICATED THAT THEY HAD EXPERIENCED THE DEATH OF A LOVED ONE



CHILDREN IN GEORGIA WILL EXPERIENCE THE DEATH OF A PARENT OR SIBLING BEFORE THE AGE OF 18.

7,300

CHILDREN DIE EVERY YEAR IN THE U.S.



OF THOSE, **83%** HAVE SURVIVING SIBLINGS